



System Architecture

The Check Your Bias (CYB) system architecture is split into four major modules at a high level, the modules are:

1. Firebase
 - (a) Responsible for storing the actual data.
2. Data Model
 - (a) Responsible for providing an interface between the Firebase database its client applications in the form of concrete data models.
3. Mobile Client
 - (a) Responsible for providing a user interface for users to interact with the system. Implemented with React components.
4. Crowd Source Approval Utility
 - (a) Responsible for approving or denying crowd sourced content uploaded to the system through the Mobile Client

We will now describe each module in detail.

Firestore

Firestore provides one key features we will use for CYB: data storage. We will use the data storage feature to store all the CYB data in relational form according to the UML diagram provided in this document. In place of a full server, we will utilize Firestore to fetch data via our Data Model module. We can then implement functionality to pre-process our data before returning it to the client application.

From a user's perspective, this module is hidden other than the views we provide to the data.

Data Model

The data models are responsible for abstracting access to the Firestore database in a unit-testable way. They are a direct reflection of the data UML diagrams provided in this document. The data models are then used by the Mobile Client and Crowd Source Approval Utility to access and write to the Firestore database. From a technical perspective, this module will consist of a group of TypeScript classes which encapsulate the raw data provided by fetching the appropriate data from the Firestore database. The data model also will handle any preprocessing of the data into more application friendly forms. For example, the data model can produce a ranking list of candidates from processing the raw Firestore data.

Again, from a user's this part of the system is hidden. The Mobile Client will interact with this module directly to produce the views the user will experience.



Mobile Client

The mobile client is a user centric module. The mobile client, written in web technologies, will provide a view to the user to interact with our system. From a technical perspective, this module will be implemented as a collection of React components which are fed data through the Data Model module by utilizes the various TypeScript classes provided by it.

From a users perspective, the mobile client will reside as a native phone application on iOS and Android. The native application, generated by Phonegap, will consist of a webview that displays the application generated by the composition of React components. The user will be able to contribute crowd data, and participate in the CYB system via this module.

Crowdsourcing Approval Utility

The Crowd Source Approval Utility (CSAU) will provide administrative access to the Firebase database to approve or deny submissions to the crowd source data set. From a technical perspective the CSAU will be a NodeJS command-line utility which will interact, via the Data Model module, with the Firebase database. From a users perspective (the user in this case is an administrator), the command-line utility will allow listing pending-approval submissions and approved submissions. It will also allow administrators to deny and approve submissions.

Interfaces Between Modules

The major interfaces of CYB generally exist with respect to accessing data. The interfaces are as follows:

Mobile Client & Data Model

The Mobile Client module will interact with the Data Model module to obtain data to display to the user. It will also interact with the Data Model to store user preferences, political profile additions, and crowd sourced data. This interaction from a technical perspective will involve constructing TypeScript classes exposed by the Data Model module. These classes can be constructed by JSON object, or by a simple constructor. Once constructed, the mobile client can use the model to fetch or store data. The Data Model will then take these actions and interact with the Firebase database.

Crowdsourcing Approval Utility & Data Model

Similar to how the Mobile Client functions, the Crowd Source Approval Utility will interact with the Data Model module to obtain and change approval queues in the Firebase database. Since the Crowd Source Approval Utility is also written in JavaScript (similar to the Mobile Client), the interface will similarly consist of constructing TypeScript classes, and invoking interfaces to fetch and save data.



Firestore & Data Model

Finally, there will be an interface between the Data Model and the Firestore database. The interface will execute with HTTP REST requests which will fully specify the interactions between the models and the database. For example, if storing a new user object, the Data Model module will use the information specified by the clients of the Data Model (such as username), to generate and execute a request to the Firestore database for storage.

Alternative Designs

Facebook Login

Instead of using Facebook authentication in order to log in to CYB, we also considered building out our own authentication system or using multiple systems such as Google+ alongside Facebook. While using Facebook authentication makes building on the developers side significantly easier, it also ensures security. It trades off ease of access to existing Facebook users for the pain of signing up for Facebook and the loss of a potential user who is vehemently against Facebook. We chose to use Facebook over a multi-system login step because it opens up possibilities for the future in case we want to further personalize CYB with some of Facebook's social functionalities.

Firestore Vs. Parse

We strongly considered using Parse over Firestore. While they offer similar features, Parse allows for everything we need but is also backed by Facebook which we chose as our login feature so the integration is likely better. Firestore offers real time data as its main benefit over Parse but this is a feature that is most likely unimportant for the purposes of CYB. However, it was recently announced that Parse would be discontinued at the beginning of next year. We chose to use Firestore because it offers similar features to Parse but the skills and knowledge we would develop while using it would persist and so we would not have to migrate platforms if the project continued further.

Data Storage

For each **user**:

- Facebook Id
- Issues they have submitted
- Issues they have responded to

For each **candidate**:

- A unique Id
- Their name
- A source for users to get more information about this candidate

For each **issue**:

- A unique Id
- The issue content, i.e. a quote from a candidate
- A source



- Candidate opinions where applicable

The schemas of the objects we will be using (represented in Orderly format), which reflect how our objects will be stored, are as follows:

```
User {
  integer userId;
  string email;
  string firstName;
  string lastName;
  integer age;
  integer gender;
  boolean admin;
  boolean hasSeenHelpText;
  array {
    integer;
  } submittedIssueIds;
  map { integer => integer } ratedIssues;
  map { integer => integer } categoryWeights;
}
```

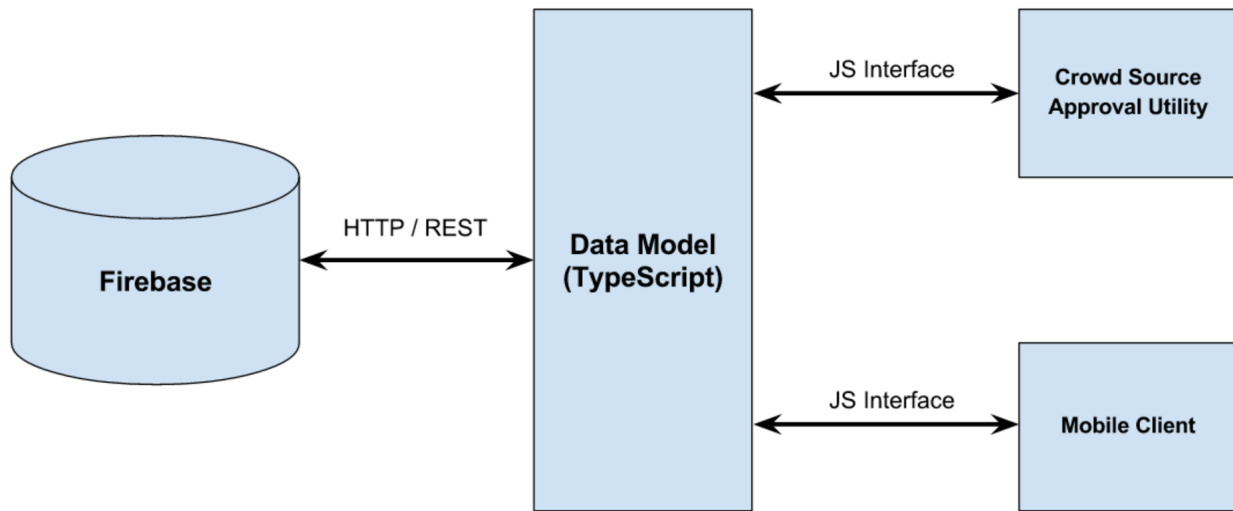
```
Category {
  integer categoryId;
  string categoryName;
  string description;
  array {
    integer;
  } issues;
}
```

```
Issue {
  integer issueId;
  string mainText;
  array {
    string;
  } sources;
  map { integer => integer } candidates;
  array {
    integer;
  } category;
  array {
    integer;
  } submitters;

  integer seenByCount;
  integer skipCount;
  map { integer => integer } ratings;
  integer flagCount;

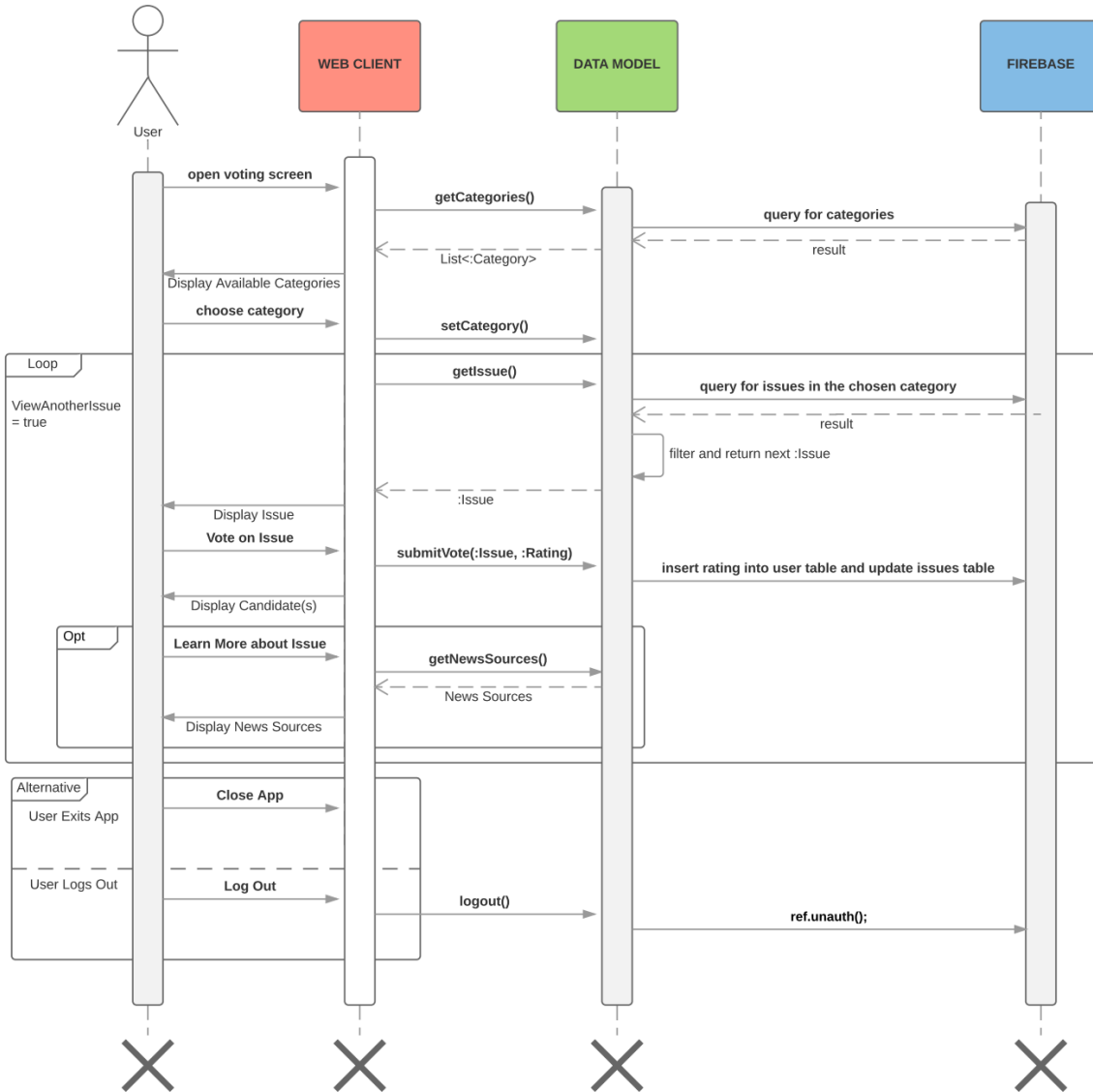
  boolean approved;
}
```

```
Candidate {
  integer candidateId;
  string name;
  string affiliatedParty;
  map { integer => integer } issues;
  string website;
}
```

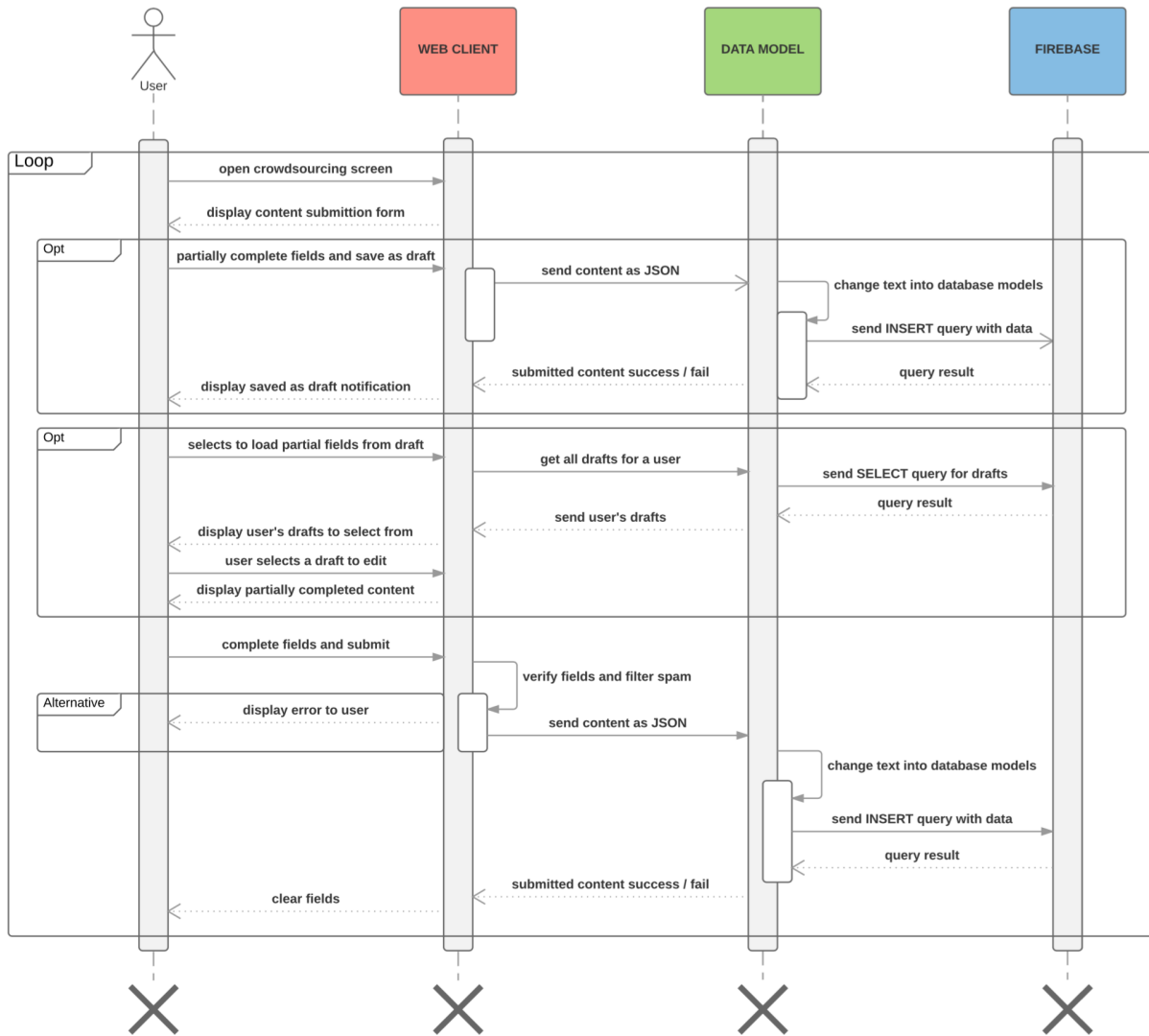



Sequence Diagrams

User Voting



Crowdsourcing





Process

Risk Assessment

1. Content

Likelihood: Medium

Impact: High

Summary / Evidence: Content is a major component of Check Your Bias and it is incredibly important that this information be both accurate and complete. The content will be directly related to the overall quality of our application.

Overall Plan: We plan to review all content that is put into our app as a team in the beginning. That means that before content can show up in the feed for users, it has to be approved by admins who will check the accuracy and completeness.

Detection: This was discussed about, but all content will be moderated before it can show up in a user's feed.

Mitigation Plan: Should this occur, users can report something as incorrect with a few simple taps when voting on a topic or issue.

2. Crowdsourcing

Likelihood: Medium

Impact: Medium

Summary / Evidence: Crowdsourcing will allow the product to grow significantly and provide a platform for many people to share their knowledge and expertise in the topic, but it also produces significant challenges. Content that users supply to the app must be vetted and screened thoroughly and pass quality guidelines. It will be difficult balancing the effort and efficiency of undergoing this screening process.

Overall Plan: All content must be initially reviewed by moderators, but in order for this to scale there must exist a limit to how much one can spend on a single topic before making a decision.

Detection: Moderators will need to be careful that the time spent approving or disapproving content is of high quality so that a short amount of time can be spent on each submission while also insuring that only high quality content is approved.

Mitigation Plan: Should this fail to happen, then users will be able to flag content for review (as discussed in the previous risk).

3. Content Creation

Likelihood: Medium

Impact: Medium

Summary / Evidence: A major feature of our end product is providing users the option to answer a set of questions that will help the product guide them towards a candidate whose opinions match their own. Since this process and criteria will at first be created manually by us, the creators of the products, there is a risk that our bias or incomplete understanding of the political situation will impact the quality of this initial survey and will thus degrade the overall quality of the product.

Overall Plan: In addition to all content being approved by a set of moderators, each moder-



ator should carefully consider whether the submission is inherently bias towards a particular candidate or viewpoint.

Detection: Detection can happen in 2 places: another moderator will catch it before it is approved or a user will flag the content.

Mitigation Plan: If a moderator finds content to be inherently biased, then they may edit the content to be better suited for the content feed.

4. Lack of Engagement

Likelihood: Low

Impact: High

Summary / Evidence: A user may come into our app and only answer a few questions and then stopping. This does not give us enough evidence to make any conclusions about who the user most closely relates to in terms of the candidates.

Overall Plan: We will display a message saying that there is not enough information yet to make any conclusions about the user’s political views if the user tries to access the analysis page.

Detection: This can be detected if the user tries to access his or her political profile page before they have ranked enough topics or issues.

Mitigation Plan: The main way of mitigating this risk is to tell the user they must answer X questions or topics before we have enough information to make a conclusion about their political profile. If a user has already taken the time and effort to download our application, then it is likely that asking them to spend a few more minutes rating topics will not deter them away from CYB. Unfortunately, it would be incredibly difficult to make any conclusions based on such little data.

5. Rated Content

Likelihood: Medium

Impact: Medium

Summary / Evidence: As a user rates content in his or her feed, it is likely that they will encounter a category that is of not much importance to them. For example, if I have an extreme bias against Trump and disagree on every single one of his viewpoints – then it is highly unlikely for me to have my views changed (the main idea of CYB is to help educate voters about their views and how they relate to the candidates’ views). If I rate a quote of Trump’s that happens to be one of his main campaign points as “Highly Disagree”, then I probably won’t agree with many of his other points.

Overall Plan: This can be mitigated by using a user’s vote on a topic as an indicator whether he or she agrees with a candidate before the user’s political profile is made. The server can then send topics to the user that help complete the profile rather than sending more topics on someone or something that they do not care for.

Detection: Detection of this risk is a difficult task. We can look at the likelihood of a user voting “Highly Disagree” on a topic given that they also voted “Highly Disagree” on this other topic and use this as a metric in determining whether or not to show them.

Mitigation Plan: Largely discussed above, we want to show users topics that help complete our political profile of them. This means that we should have a diverse set of content that can be utilized to help find the right topics to present to the user.



Project Schedule

Team Goals for	Front End Team	Back End Team	Full Stack Team
January 26th <ul style="list-style-type: none"> • Submit Software Design Specification • Submit slides for design spec. • Build system familiarity 	Learn React Aaron - Modules and Interfaces, UML Roe - Test plan, design assumptions Geoffrey - Code style guidelines	Learn Firebase Todd - Doc. plan, Database schema Riley - UML diagram Nick Data storage, alternative designs	Crowdsource Design Sonja - Schedule, sequence diagram Ryan - Risk analysis, sequence diagram
February 2nd <ul style="list-style-type: none"> • Product webpage • 0 feature release 	React Components Aaron - User profile Roe - Voting Geoffrey - Analysis	Typescript & Firebase Todd - User Riley - Issues Nick - Candidate - Category	Basic Crowdsourcing Sonja - Frontend Ryan - Backend
February 9th <ul style="list-style-type: none"> • Good progress 	User Interactions Aaron - User profile Roe - Voting Geoffrey - Analysis	Test Backend Todd - User Riley - Issues Nick - Candidate - Category	Test Crowdsourcing Sonja - Unit tests Ryan - Unit tests
February 16th <ul style="list-style-type: none"> • Beta release 	Clean up UI Aaron - Test voting (front end) Roe - Test analysis (front end) Geoffrey - Test user profile	Stretch Goals / Bugs Todd - Multiple elections Riley - Advanced analysis Nick Share to Facebook feature	V2.0 / Bugs Sonja - Data de-duplication Ryan - Data aggregation
February 23rd <ul style="list-style-type: none"> • Feature complete release 	Stretch UI Features Aaron - Select different elections Roe - UI sharing to Facebook Geoffrey - Data visualization	Stretch Features Todd - 1 user test Riley - 1 user test Nick 1 user test	Focus Group Testing Sonja - 1 user test Ryan - 1 user test
March 1st <ul style="list-style-type: none"> • Submit release candidate 	Bugs Aaron - User profile bugs Roe - Voting / Facebook bugs Geoffrey - Analysis view bugs	Bugs Todd - User function bugs / elections Riley - Issue / analysis bugs Nick Category and Facebook bugs	More Bugs Sonja - Crowd bugs, general frontend Ryan - Crowd aggregation bugs



Team Structure

Sonja is the Project Manager (PM) and her responsibility is to make sure the project stays on schedule and that the team is getting the support they need to complete their tasks. Development will be driven by the SCRUM methodology with short one-week sprints. Tasks will be assigned based on progress made during the previous week and input from our customer. The preliminary schedule can be seen in the table above. Todd, Riley, and Nick will work on the backend services, including database design and providing the appropriate data abstractions for the front end team. Geoffrey, Rooe, and Aaron comprise the front end team, working on implementing the UI elements in our design and the interactions for each of those elements. Ryan will lead the crowdsourcing feature and will write up the weekly status reports. Sonja will work on crowdsourcing as well, in addition to helping out on other tasks when needed. This ensures that the PM is familiar with the progress of the whole system. The entire team will meet twice a week, at 9:30 on Tuesdays and Thursdays. Each subteam will arrange additional meetings to work towards completing team tasks. We will track progress on issues through the GitHub issue tracker, and use slack for general communication.

Test Plan

Unit Tests

- Tests that our independent modules and moving parts conform to the specifications and are implementation agnostic. Will cover the backend data pipeline components, frontend UI elements, and the database health and status.
- Tests will be developed by the author of the module or package. Whomever adds a new feature or endpoint is responsible for its complete test coverage.
- We will run these tests automatically every time that a team member merges a change to the repository using the Jenkins continuous integration system.

System Tests

- Tests that the components of the system are well integrated and perform to the specifications and are both stable, reliable, and efficient.
- Tests will be developed by the authors of a particular feature. Whomever adds a new component or changes an existing one must make sure that it does not break or flaw anything in the existing product. All changes should serve to better the product.
- We will not be using automation to test the overall system. Instead, every time a new feature gets added or changed we will check its integration with the rest of the system as well as overall usage anytime that we build and use the product on our own.



Usability

- Tests that the system and product as a whole is not only functional but also usable and intuitive to both experienced and new users.
- We will develop tests both in scripted fashion, by preparing scenarios and exercises for our test subjects to go through, and also on the fly, as we think of new options or scenarios while interacting with tests subjects.
- We will run these usability tests frequency, mainly while developing new features. Once a prototype is working to a suitable and functional level, we can approach our acquaintances (friends, professors, band members, old lovers, family members) and ask them to undergo a full interaction with the product while we observe. The persons that get more frequent interactions with our platform in this fashion will become our “experienced users” while new victims will play the role of new or inexperienced users.

Adequacy of Test Strategy / Bug Tracking

We believe that while this test strategy is not perfect, and could absolutely benefit from further tweaking and more personnel dedicated to its perfection (such as full time quality assurance engineering at a tech organization), for the extremely limited duration and scope of this project, it is adequate.

We will be using GitHub Issues for bug tracking throughout the duration of this project. It will be available and open to the public through the following link: [Github Link](#). Issues will be reported using the system by whomever finds them while testing using one of the aforementioned methods, and assigned to the team responsible for that specific part of the product. Through Slack integrations, the team that the issue got assigned to will get sent a message to their Slack channel with a link to the issue on GitHub. For example, if during usability testing on a friends computer one of the team members finds a bug where the menu does not render correctly on Internet Explorer versions pre-1998, they will file an issue assigned to the front-end team. A message will be posted on the #frontend Slack channel alerting the members of that team to the presence of the issue on the GitHub Issues website.

Documentation Plan

Very little external documentation will be required to enable users to understand and use CYB. To explain its purpose, we will use our web page, as well as the application download pages on the Google Play Store and the Apple Store. To help users to understand how to use the app, we will develop a UI that integrates help text to unambiguously display functionality.

Code Style Guidelines

We will be using a combination of Typescript, JSON, and React, which are all JavaScript-based languages.

TypeScript <https://github.com/Microsoft/TypeScript/wiki/Coding-guidelines>



JSON <https://google.github.io/styleguide/jsoncstyleguide.xml>

React <https://github.com/Khan/style-guides/blob/master/style/react.md>

The majority of our guidelines will be enforced in our build system pipeline. As the first step in our pipeline, we will have a tool which runs through all of the source code and checks for any inconsistencies between the actual source code and the style guidelines. Such modules are already available open-source, such as JSLint for Javascript and TSLint for Typescript. Should this step of the build process generate any errors, the build will automatically fail until the developer has corrected the errors.

In addition to enforcing style through automated tools in the build process, we will also hold thorough code reviews for every major commit. Code reviews will be open to all team members, allowing the opportunity for humans to catch style violations that automated tools may not catch.

Design Changes and Rationale (2/19)

Testing

Our test plan has been severely expanded than what is described in this document. For instance, we have added unit tests for most of the classes on the backend to ensure the reliability of our system. In addition to this we wanted to add system wide tests to make sure that several of our use cases were covered and tested in an automated fashion. This called for the use of webdriver tests using the Selenium framework. From their Github: “Selenium is an umbrella project encapsulating a variety of tools and libraries enabling web browser automation. Selenium specifically provides infrastructure for the W3C WebDriver specification a platform and language-neutral coding interface compatible with all major web browsers.” This automation platform was then used to create these end to end system tests that touch many different parts of Check Your Bias in one test. This will help us catch bugs spanning multiple modules before they have an effect on the user.

Crowdsourcing Approval Utility

Another significant change that has occurred since the original writing and creation of this document is the change to the Crowdsourcing Approval Utility. Initially the plan was to have a terminal application that could be used to examine the pending crowdsourced posts and then accept / reject them. This would be done by sending commands in the terminal with no advanced User Interface. We established that this would not be very user friendly to whichever worker was required to approve content and that we would need a delicately designed user interface with a solid user experience. The best way to do this was to incorporate this functionality into the app itself. This was done by adding a tab to the crowdsourcing view, which is only visible if a flag is set in the database for the currently logged in user. This allows the approver to easily see pending content in a native way - this content can then be accepted or rejected within the application. Accepted content will then be fed into the feed of all other users, while rejected content will be archived. A figure showing this design can be seen below:



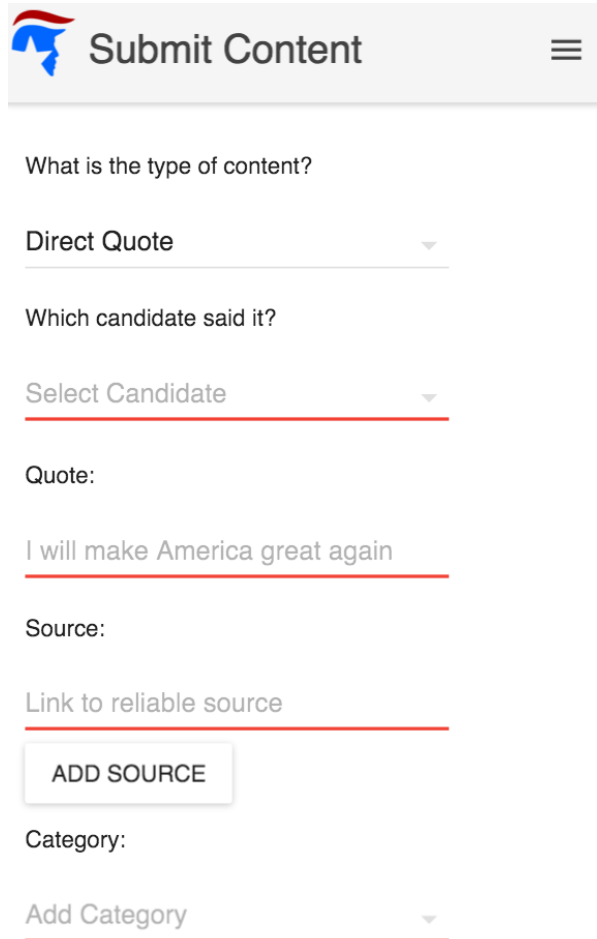
Design Changes and Rationale (2/26)

iOS Support

See the updated requirements doc for more information regarding our discontinuation of iOS support.

Crowdsourcing Fields

We have moved away from the annoying “This field is required” text that plagued our crowdsourcing view. Instead, we have chosen a much more friendly approach that has a better user experience. Now, when a user attempts to submit content with incomplete / invalid fields, red underlines will appear on the content that they are missing. We have also added URL validation so that only valid sources can be submitted with a piece of content. See the below image for more clarification. (Note: these underlines are only present if the user made a mistake and then tried to submit the content)



The screenshot shows the 'Submit Content' form with the following fields and their validation status:

- What is the type of content?**: Dropdown menu with 'Direct Quote' selected.
- Which candidate said it?**: Dropdown menu with 'Select Candidate' selected. This field has a red underline.
- Quote:**: Text input field containing 'I will make America great again'. This field has a red underline.
- Source:**: Text input field containing 'Link to reliable source'. This field has a red underline.
- ADD SOURCE**: Button.
- Category:**: Dropdown menu with 'Add Category' selected. This field has a red underline.